

Content Delivery Network



©2013–2025 Tencent Cloud. .
(Tencent Cloud) .
 . . .
 .

Tencent Cloud

(Tencent Cloud) (Tencent) (,
) . 3 .
(Tencent Cloud)
 , .
 ,
 .

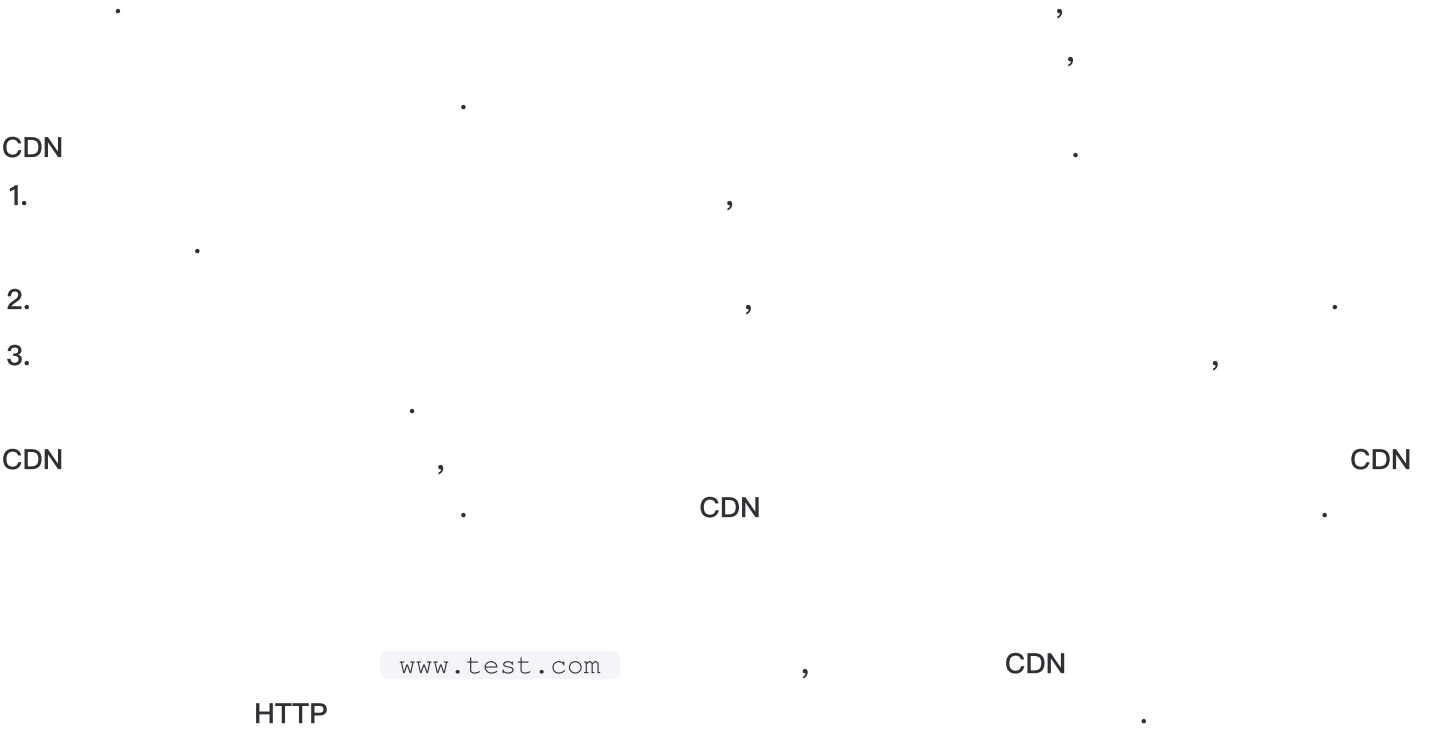
:

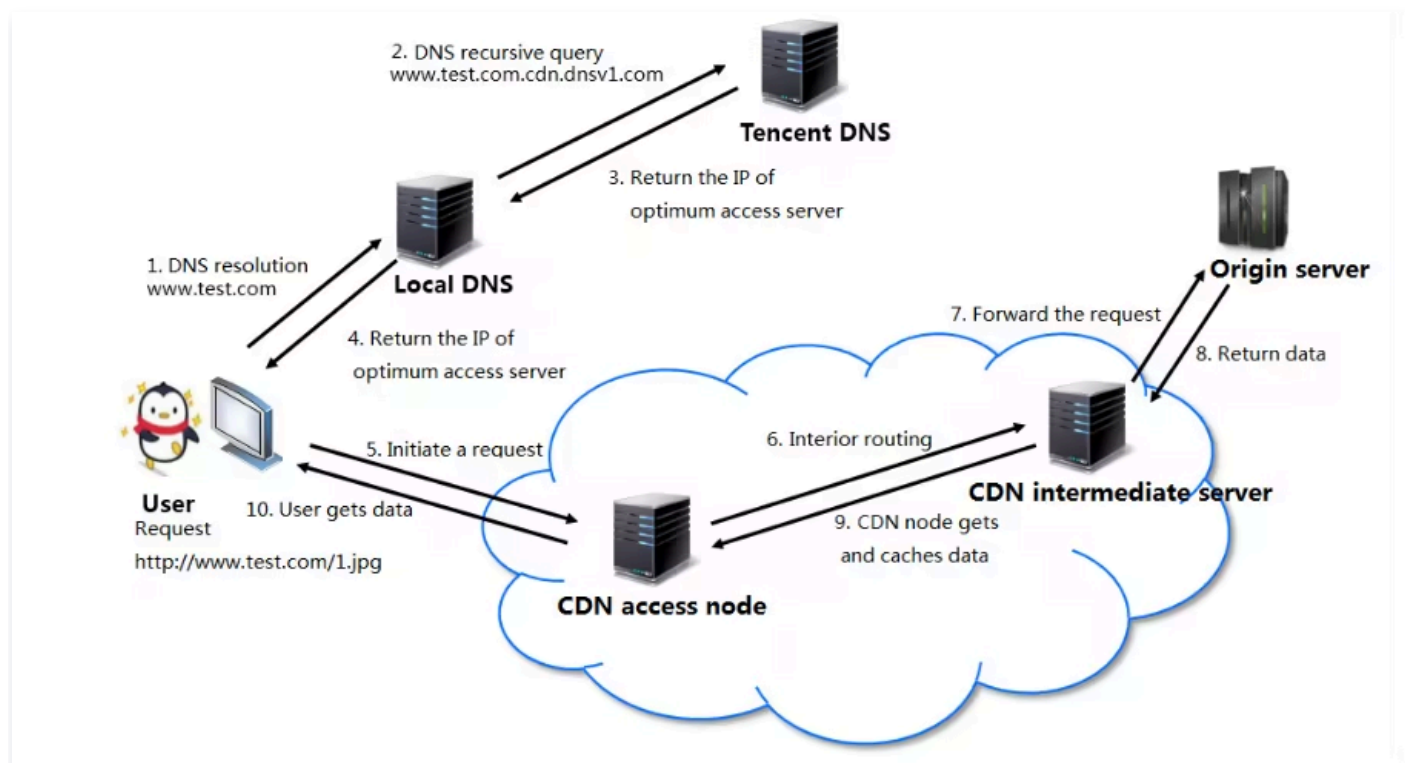
CDN ()

:: 2024-12-31 10:07:10

CDN ?

Content Delivery Network(CDN)





1. `www.test.com` (: 1.jpg) , Local DNS .
2. Local DNS `www.test.com` CNAME `www.test.com.cdn.dnsv1.com` , Tencent DNS(GSLB) . GSLB Tencent Cloud IP .
3. Local DNS Tencent DNS IP .
4. IP .
5. IP 1.jpg .
6. IP 1.jpg , (10) 1.jpg (6, 7, 8) (9) (10) .

:: 2024-12-31 10:08:09

CDN

2000

110Tbps

ISP

Tencent Cloud

China Mobile, China Unicom, China Telecom

50

ISP

, 4

CDN



	,

. 2022 12 CDN 70

50Tbps



	,	,	,	,	,					
	,									
	,	,	,	,	,	,	,	,	,	,

, ISP , , IDC

.

Tencent Cloud CDN

GSLB

,

,

.

CDN

.

Tencent Cloud

CDN

.

CDN

5

.

.

CNAME

.

DNS

.

Tencent Cloud CDN

,

.

•

,

,

.

•

.

,

.

•

,

.

•

(IP

)

COS

,

,

,

Origin-pull

.

•

Referer

/

, IP

/

,

IP

.

•

,

HTTP

.

- CDN Origin-pull , Range GET 301/302 Origin-pull

.

- CDN HTTPS , HTTP/2 .

- HTTP Response Header, SEO

.

- , URL .

- CDN , , , , , ISP, , 1 .

- CDN 1 origin-pull , , , .

- ISP .

- CDN , , .

Cloud Log Service

- .

- CDN .

CDN API

CDN API . API API

, ,

.

:: 2020-07-24 15:42:06

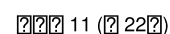
Tencent Cloud CDN

	<p>, UGC (: ,) .</p>
	<p>, ROM , .</p>
	<p>, Tencent , .</p>
ECDN	<p>ECDN Tencent Cloud , / , / .</p>
SCDN	<p>SCDN CDN . DDoS , CC WAF() , CDN .</p>

. Tencent Cloud CDN

Tencent Cloud

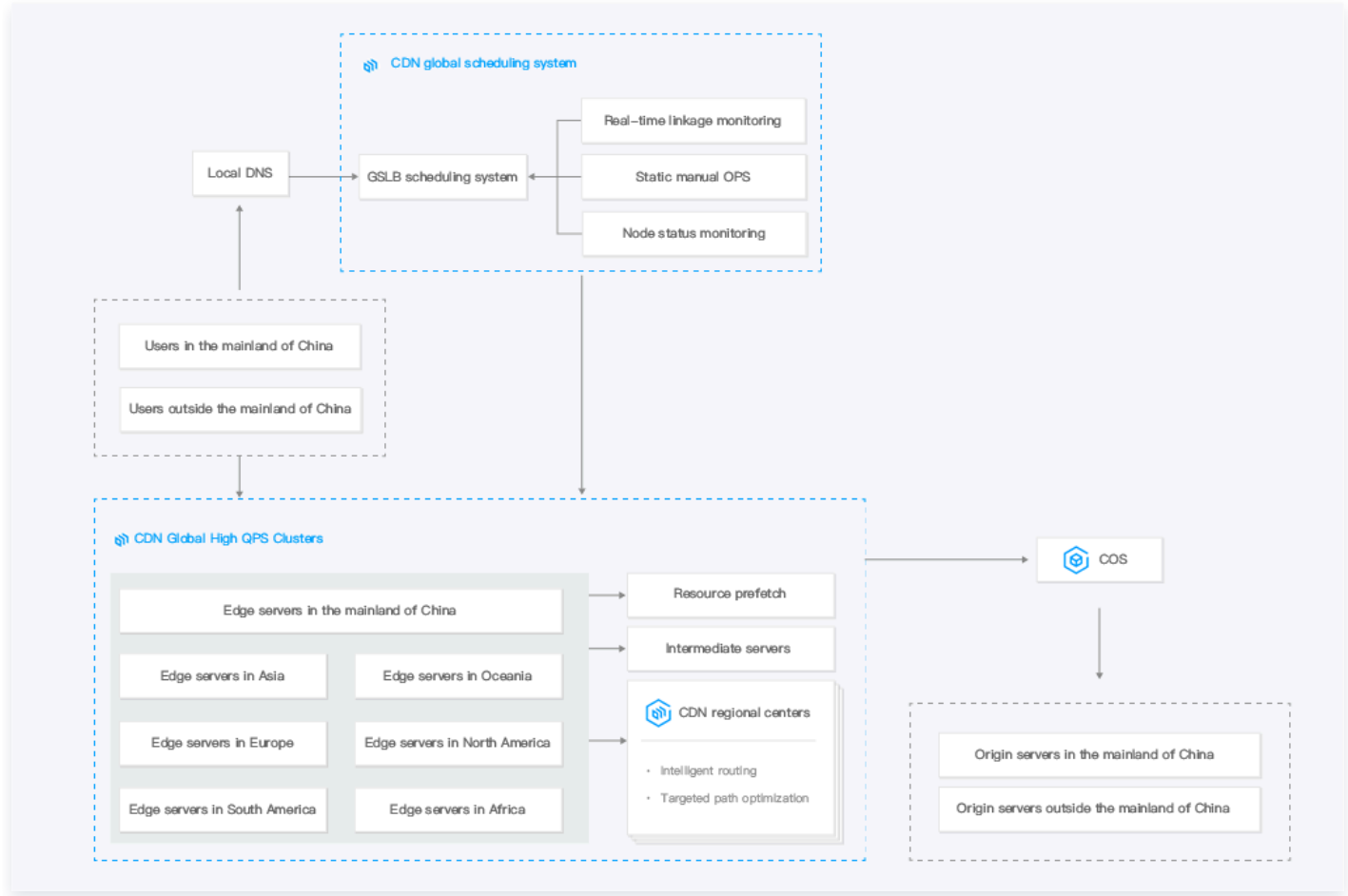
•



，ROM，

Tencent Cloud CDN

，

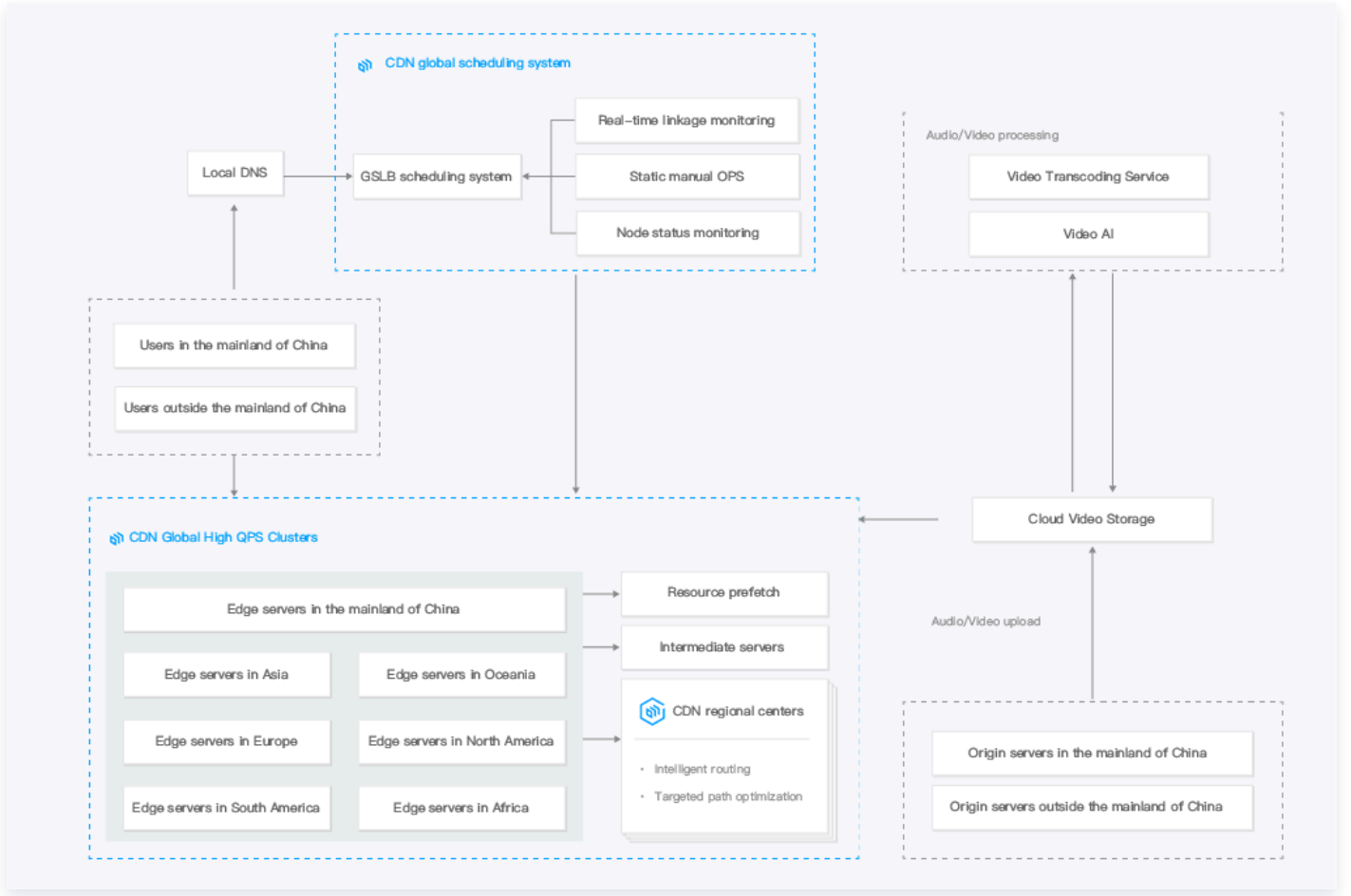


App, TV VOD

. Tencent Tencent

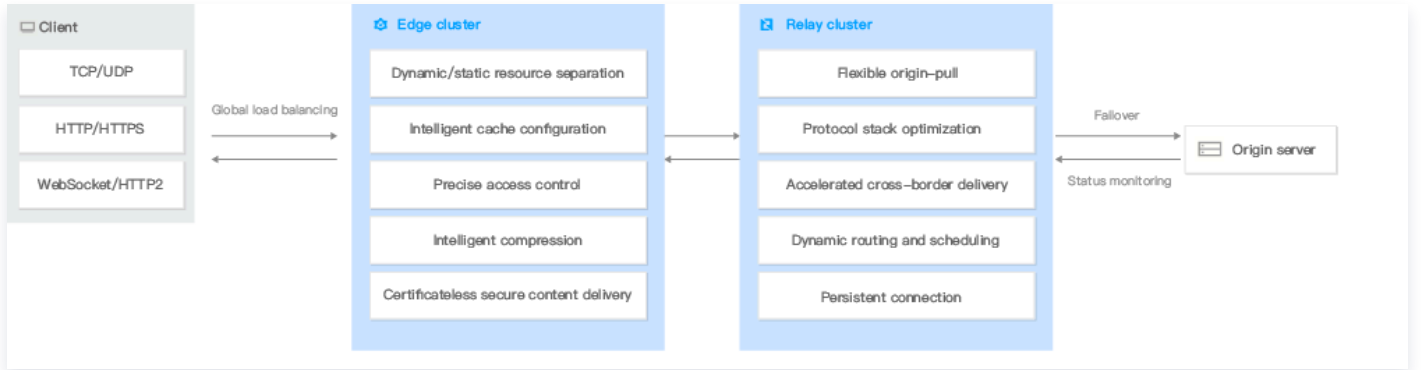
Cloud CDN

，



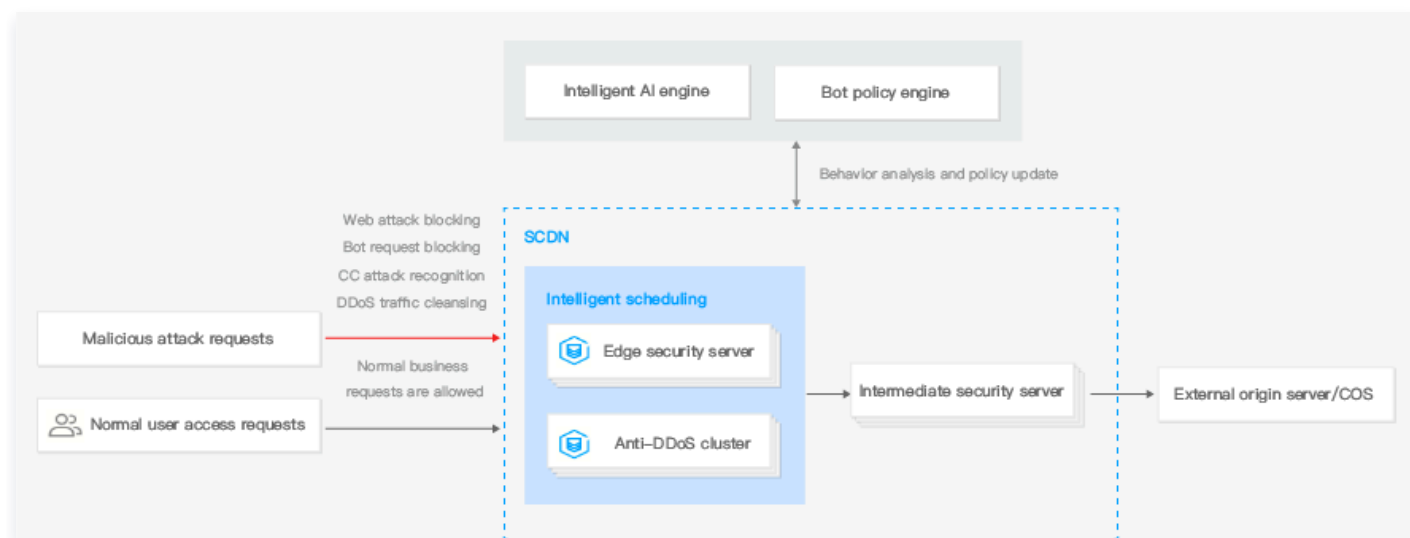
ECDN

ECDN 支持 / 静态资源（如 .asp、.jsp、.php、.cgi、.perl 等文件，API 接口等）的加速。Tencent Cloud ECDN 采用 Origin-pull 模式，即当用户请求静态资源时，ECDN 会从源站拉取资源并缓存，后续请求可直接从 CDN 边缘节点获取。



SCDN

SCDN / . , , .
Tencent Cloud SCDN CDN DDoS , CC
WAF() .
Tencent Cloud SCDN CDN DNS
Tencent Cloud CDN



:: 2021-12-06 12:22:22

, CDN COS

IP

COS

Tencent Cloud COS , bucket .

CDN

CNAME

CNAME (Canonical Name) .

host.example.com , WWW MAIL

DNS www.example.co

m mail.example.com CNAME , CNAME

host.example.com .

CNAME

CDN .cdn.dnsv1.com

CNAME Tencent

Cloud CDN , Tencent Cloud CDN .

: html, css js , , , , apk , .

: API, .jsp, .asp, .php, .perl .cgi .

Origin-pull

CDN Origin-pull
.
CDN
.

CDN Origin-pull
Origin-pull
.

(Domain Name)
.
(
)
.
, FTP

Bucket

(Bucket) COS
.
.
.

:: 2025-01-25 15:45:58

ICP

Tencent Cloud CDN , ICP .

1. Tencent Cloud CDN CDN . Tencent Cloud , Tencent

Cloud CDN CDN .

2. Tencent Cloud CDN CDN . , Tencent Cloud

CDN .

- ☐ Tencent Cloud CDN
- ☐ Tencent Cloud
- ☐ Tencent PC Manager

Tencent Cloud CDN , , . , , .

-
- / /
-
-
-
- ,

	100

	90
	URL : 10000 : 100
	30

3 Tencent Cloud CDN
Tencent Cloud CDN
.

CDN ()

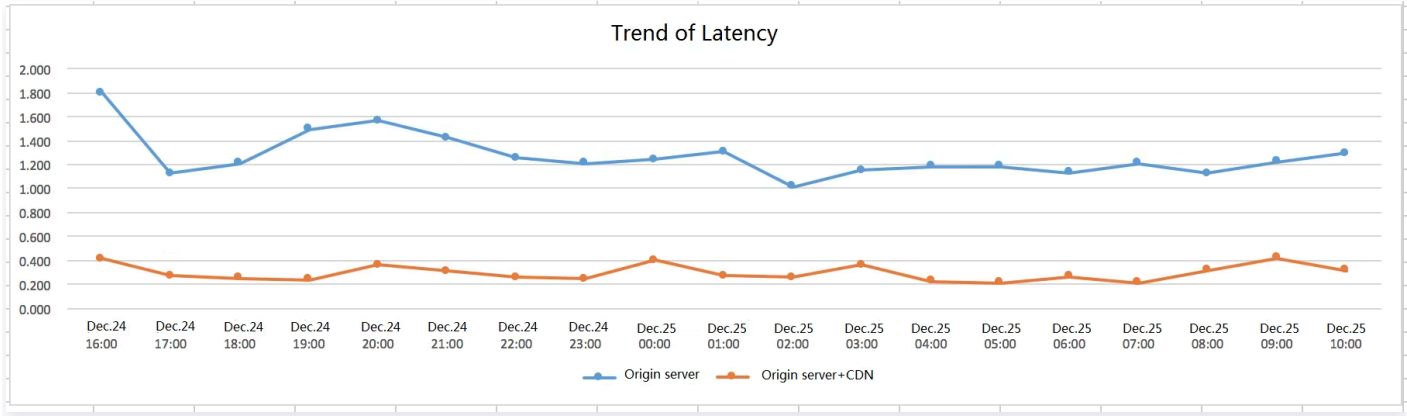
:: 2025-01-25 14:56:15

(1G), Tencent Cloud CDN.

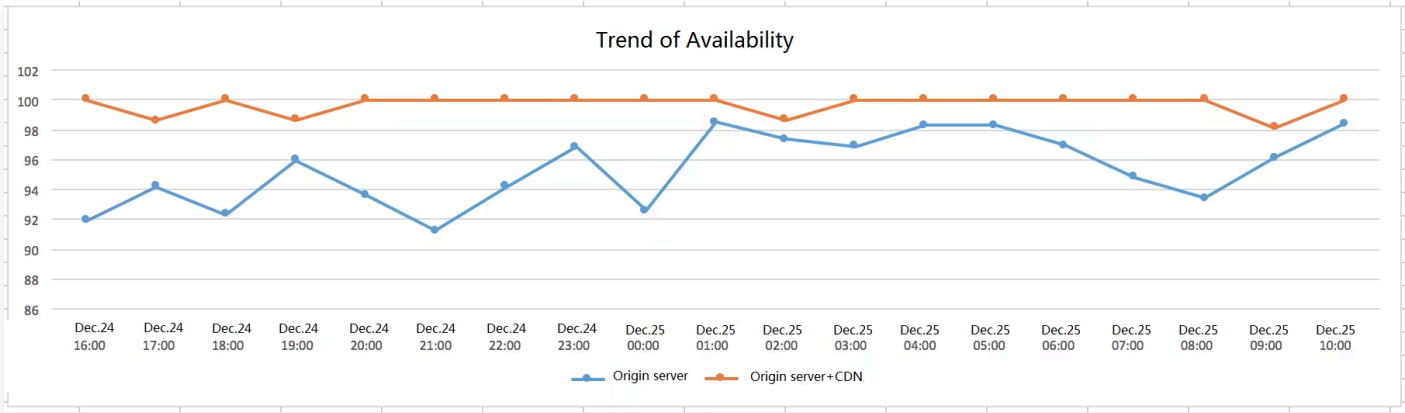
TINGYUN .

	2019-05-21 07:45 ~ 2019-05-21 19:15
ISP	China Unicom, China Telecom, China Mobile
	http://*/simptab-wallpaper-20190520181120.png
CDN	http://*/simptab-wallpaper-20190520181120.png

:



: %



		()				
CDN	2235	0.196	05 21 07:45	0.117	05 21 12:15	0.313
	2177	0.933	05 21 10:45	0.635	05 21 08:15	1.827

	CDN					
	()	(%)		()	(%)	
05 21 07:45	0.117	100.00	98	0.945	100.00	98
05 21 08:15	0.160	100.00	91	1.827	98.86	88
05 21 08:45	0.135	99.91	92	0.645	100.00	88
05 21 09:15	0.240	100.00	97	0.821	98.95	95
05 21 09:45	0.190	100.00	95	1.315	98.80	83

05 21 10:15	0.158	100.00	95	0.745	98.95	95
05 21 10:45	0.170	100.00	90	0.635	100.00	89
05 21 11:15	0.123	100.00	90	0.692	97.65	85
05 21 11:45	0.246	100.00	96	0.653	100.00	98
05 21 12:15	0.313	100.00	89	0.763	97.83	92
05 21 12:45	0.258	100.00	92	1.181	100.00	93
05 21 13:15	0.175	100.00	95	1.122	97.67	86
05 21 13:45	0.173	100.00	97	1.148	98.89	90
05 21 14:15	0.257	100.00	81	1.083	100.00	81
05 21 14:45	0.214	100.00	103	1.044	100.00	97
05 21 15:15	0.240	100.00	92	0.737	97.98	99
05 21 15:45	0.169	100.00	94	0.969	98.85	87
05 21 16:15	0.146	100.00	93	0.769	98.86	88
05 21 16:45	0.269	100.00	91	0.724	100.00	86
05 21 17:15	0.181	100.00	91	1.072	98.02	101
05 21 17:45	0.208	100.00	96	1.000	100.00	90

05 21 18:15	0.219	100.00	94	0.744	98.86	88
05 21 18:45	0.119	100.00	81	0.841	98.84	86
05 21 19:15	0.212	100.00	102	0.981	97.87	94
/	0.196	99.996	2235	0.933	99.04	2177
	0			0		